

NEXT THERMAL PTZ CAMERA

INNOVATIVE EXPLOSIONPROOF THERMAL PTZ CAMERA STATION

HAZARDOUS AREA

- **INNOVATIVE PRODUCT, BEST IN CLASS TECHNOLOGY**
- CLASS1/DIV1 EXPLOSIONPROOF PTZ FOR HAZARDOUS LOCATIONS
- AISI316L STAINLESS STEEL CONSTRUCTION
- CERTIFICATION TEMPERATURE -76°F +176°F (-60°C + 80°C)
- THERMAL: 640X512 RESOLUTION, 9HZ OR 25HZ, LWIR
- WIDE RANGE OF THERMAL LENSES
- VERY LOW POWER CONSUMPTION
- EASY MAINTENANCE
- IP68/69, NEMA 4X
- OPTIONAL BUILT-IN FIBER MEDIA CONVERTER
- OPTIONAL BUILT-IN 120VAC POWER SUPPLY



ONVIF®



TECHNICAL SPECIFICATIONS

GENERAL & MECHANICAL

Dimensions	See dimensions drawings
Operating Temperature	-60° +60°C, +75°C peak (-76°F +140°F, +167°F peak)
Construction	AISI316L Stainless Steel
Finish	Electro-polished
Window	Germanium HC coated 50mm (Thermal)
Mounting	4x Ø11 on 195 PCD
Cable entries	1x M25x1,5 or 3/4in (adapter) (second cable entry available on demand)
Pan Angle	360° (continuous rotation)
Pan Speed	0 – 40°/second
Pan Torque	20Nm (limited with safety device)
Tilt Angle	180° (+/-90°)
Tilt Speed	0 – 20°/second
Tilt Torque	20Nm (limited with safety device)
Rotation angle	Electronically adjustable limit switches
Backlash	<0,1°
Max preset accuracy	0,04°
Control protocol	Pelco D (RS485)
Weight	Unit: 68lb / Package: 79lb

ELECTRICAL

Temperature Climatization	
- Camera Housing	T[°C] ON = 54 ± 7°F (12 ± 4°C) T[°C] OFF = 68°F ± 5°F (20 ± 3°C)
- Gear motors	Electronically controlled de-icing
Available voltages	24VAC, 120VAC (+/-10%) 24VDC available on request
Power consumption	10W min (stationary and de-icing/heater/wiper off) 130W MAX

CERTIFICATIONS

Ingress Protection	EN 60529 (IP68/IP69), NEMA 4X
Rating	Class I, Division 1, Groups A, B, C and D T5/T4 -50°C ≤ Tamb ≤ +60°C/80°C (only for Canada) Class I, Division 1, Groups B, C and D T5/T4 -25°C ≤ Tamb ≤ +60°C/80°C (for US/Canada) Class II/III, Division 1, Groups E, F and G T5/T4 -40°C ≤ Tamb ≤ +60°C/80°C (for US/Canada)
North American Standards	FM Class 3615; FM Class 3810; ANSI/UL 61010-1; ANSI/UL 60079-0; ANSI/UL 60079-1; ANSI/ISA 60079-31; ANSI/UL 50E; ANSI/IEC 60529 CSA C22.2 No. 0.4; CSA C22.2 No. 0.5; CAN/CSA C22.2 No. 61010-1; CAN/CSA-C22.2 No. 60079-0; CAN/CSA-C22.2 No. 60079-1; CAN/CSA-C22.2 No. 60079-31; CSA C22.2 No. 94.2; CAN/CSA C22.2 No. 60529
EMC	EN 55035; EN/IEC 61000-6-4; EN/IEC 61000-3-2; EN/IEC 61000-3-3; EN/IEC 61000-6-2; CISPR-32; CISPR-35
LVD	EN/IEC 62368-1
RoHS	2011/65/EU + 2015/863/EU (RoHS 3)
WEEE	2012/19/EU

CAMERA (THERMAL)

Sensor	VOx Microbolometer, 12µm, uncooled
Resolution	640x512 pixels
Spectral Band	LWIR 8-14µm
Compression	H.264, MJPEG
Frame Rate	9Hz (9fps) or 25Hz (25fps)
Focus Settings	Fixed manual focus, minimum focus distance
Sensitivity	≤50mK@25°, F/1.0

INNOVATIVE EXPLOSIONPROOF THERMAL PTZ CAMERA STATION

Shutter type	NUC
Fire Detection	Yes
Image settings	Black hot, White hot, Color Palette (18 types)
Event Actions	Recording/Capture/Sending mail/PTZ linkage/Alarm output
Analytics	Line intrusion, cross-border, and region intrusion
Alarm Trigger	network disconnection, IP address conflict, full memory, memory error, illegal access and abnormal detection
Edge Recording	Yes
Gain	- Digital Filter and Imaging Denoising - Digital Detail Enhancement

Lens	FOV (HxV)	Min Focus Distance
	640x512	
9.1mm	48.6°x38.6°, F1.0	0.5m
13mm	32.9°x26.6°, F1.0	0.5m
19mm	22.9°x18.4°, F1.0	0.5m
25mm	17.4°x14.0°, F1.0	1m
35mm	12.5°x10.0°, F1.0	1.5m
55mm	8.6°x6.4°, F1.0	2m

NETWORK

Interface	100BASE-TX or 100BASE-FX/1000BASE-X (fiber)
Security	- User Authentication/HTTPS
ONVIF	ONVIF S
Protocols	- TCP, UDP, RTP, RTSP, RTCP, HTTP, HTTPS, ICMP, FTP, SMTP, DHCP, IGMP, QoS, NTP, DNS

FIBER MEDIA CONVERTER

Interface	100 Base-FX/1000BASE-X
Cabling	Singlemode (9/125 μm) /two fibers/SC connector
Maximum Distance	20km
Wavelength	1310 nm

MODELS

TXPUS1Tlxx-IP-S	New Generation Explosionproof PTZ IP camera station, 24VAC
TXPUS2Tlxx-IP-S	New Generation Explosionproof PTZ IP camera station, 120VAC
TXPUS1Tlxx-SM-S	New Generation Explosionproof PTZ IP camera station, SM FO Media Converter, 24VAC
TXPUS2Tlxx-SM-S	New Generation Explosionproof PTZ IP camera station, SM FO Media Converter, 120VAC

(+) Gridless version available on request

To order the required camera configuration, please replace "Tlxx" with the TI number indicated in the table below.

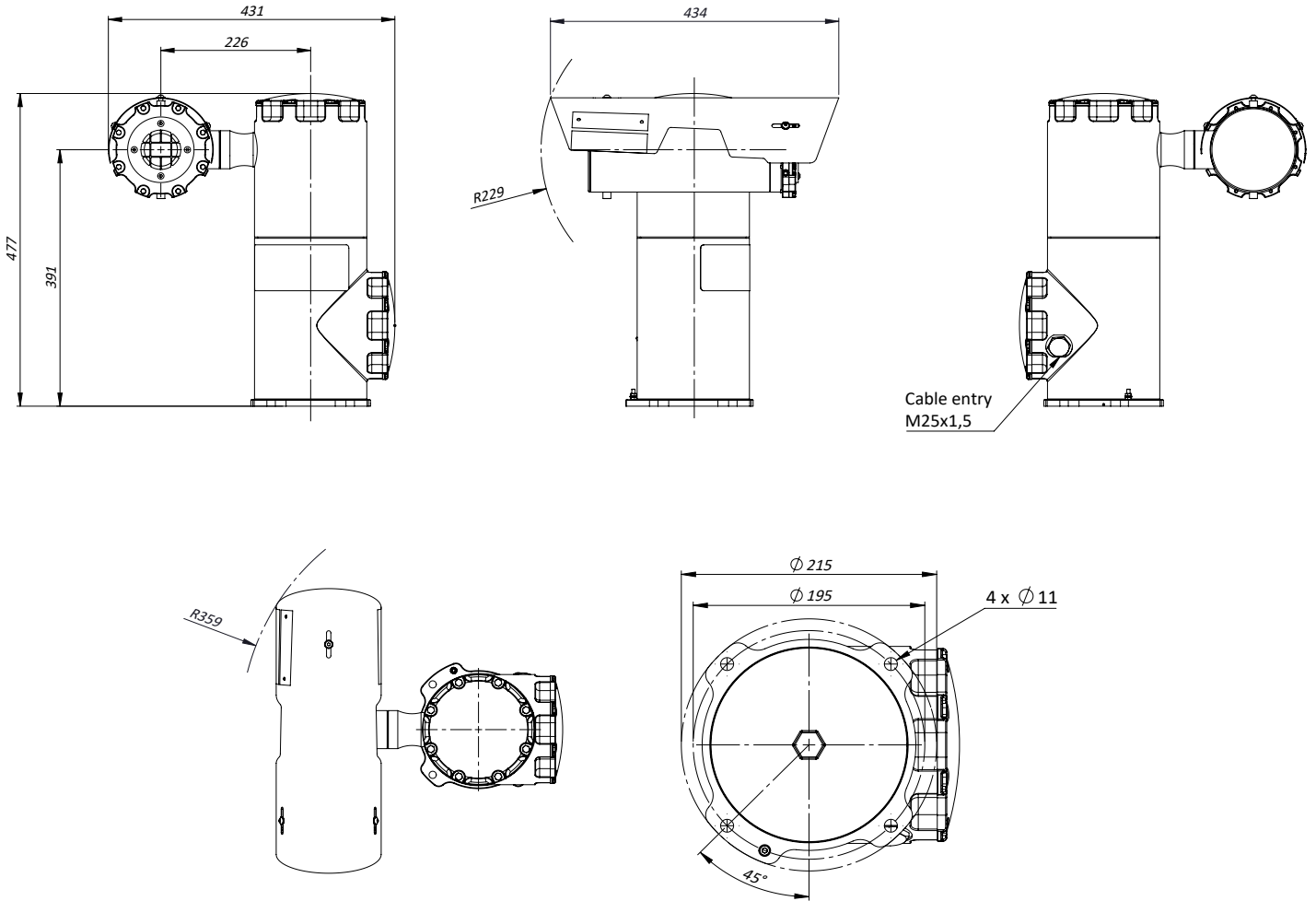
CAMERA MODEL SELECTION (TlXX)

	640x512	
	9Hz	25Hz
	9.1mm	TI22
13mm	TI23	TI33
19mm	TI24	TI34
25mm	TI25	TI35
35mm	TI26	TI36
55mm	TI27	TI37

ACCESSORIES

SSBK-L	Wall mounting bracket
---------------	-----------------------

DIMENSIONS



Dimensions in millimetres - Tolerances according QMS - Design and products specifications subject to change without notice - rev. 20240423