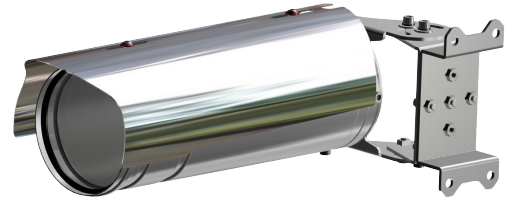


- **INNOVATIVE PRODUCT, BEST IN CLASS TECHNOLOGY**
- AISI316L STAINLESS STEEL CONSTRUCTION
- OPERATING TEMPERATURE -40°C +60°C (+75°C PEAK)
- 640X512 RESOLUTION, 9HZ OR 25HZ, LWIR
- WIDE RANGE OF FIXED LENSES
- GERMANIUM WINDOW
- 3-AXIS WALL/CEILING MOUNTING BRACKET
- EDGE RECORDING
- IP66/67
- OPTIONAL BUILT-IN FIBER MEDIA CONVERTER
- OPTIONAL BUILT-IN IP OVER COAXIAL CONVERTER
- OPTIONAL BUILT-IN 100-240VAC OR POE POWER SUPPLY



TECHNICAL SPECIFICATIONS

GENERAL & MECHANICAL

Dimensions	See dimensions drawings
Operating Temperature	<ul style="list-style-type: none"> • -40° +60°C, +75°C peak (-40°F +140°F, +167°F peak) • -20° +60°C, +75°C peak (-4°F +140°F, +167°F peak) * *Versions without heater
Construction	AISI316L Stainless Steel
Finish	Electro-polished
Window	Germanium HC coated 50mm
Mounting	See drawings next page
Cable entries	2x M20 x1,5, nickel-plated brass cable glands
Weight	Unit: 5.5 Kg / Package: 6.5 Kg

ELECTRICAL

Temperature Climatization	<ul style="list-style-type: none"> • T[°C] ON = 12 ± 4°C, T[°C] OFF = 20 ± 3°C • No climatization (versions without heater)
Available voltages	<ul style="list-style-type: none"> • 24VAC/DC • 100-240VAC • PoE
Power consumption	<ul style="list-style-type: none"> • 30W MAX • 25W MAX (PoE version)

CERTIFICATIONS

Ingress Protection	EN 60529 (IP66/IP67)
EMC	EN 55032; EN 55035; EN/IEC 61000-3-2; EN/IEC 61000-3-3; EN/IEC 61000-6-2; EN/IEC 61000-6-4; CISPR-32; CISPR-35
LVD	EN/IEC 62368-1
RoHS	2011/65/EU + 2015/863/EU (RoHS 3)
WEEE	2012/19/EU

CAMERA (THERMAL)

Sensor	VOx Microbolometer, 12µm, uncooled
Resolution	640x512 pixels
Spectral Band	LWIR 8-14µm
Compression	H.264, MJPEG
Frame Rate	9Hz (9fps) or 25Hz (25fps)
Focus Settings	Fixed manual focus, minimum focus distance
Sensitivity	≤50mK@25°, F/1.0
Shutter type	NUC
Fire Detection	Yes
Image settings	Black hot, White hot, Color Palette (18 types)
Event Actions	Recording/Capture/Sending mail/PTZ linkage/Alarm output
Analytics	Line intrusion, cross-border, and region intrusion
Alarm Trigger	Network disconnection, IP address conflict, full memory, memory error, illegal access and abnormal detection
Edge Recording	Yes
Gain	<ul style="list-style-type: none"> - Digital Filter and Imaging Denoising - Digital Detail Enhancement

Lens	FOV (HxV)	Min Focus Distance
	640x512	
9.1mm	48.6°x38.6°, F1.0	0.5m
13mm	32.9°x26.6°, F1.0	0.5m
19mm	22.9°x18.4°, F1.0	0.5m
25mm	17.4°x14.0°, F1.0	1m
35mm	12.5°x10.0°, F1.0	1.5m
55mm	8.6°x6.4°, F1.0	2m

INNOVATIVE STAINLESS STEEL BULLET THERMAL CAMERA

NETWORK

Interface	100BASE-TX or 100BASE-FX/1000BASE-X (fiber)
Security	User Authentication/HTTPS
ONVIF	ONVIF S
Protocols	TCP, UDP, RTP, RTSP, RTCP, HTTP, HTTPS, ICMP, FTP, SMTP, DHCP, IGMP, QoS, NTP, DNS

FIBER MEDIA CONVERTER

Interface	100 Base-FX/1000BASE-X
Cabling	Singlemode (9/125 μm) /two fibers/SC connector
Maximum Distance	20km
Wavelength	1310 nm

IP OVER COAXIAL CONVERTER

Interface	10/100 Base-TX over Coaxial Cable
Bandwidth	Up to 95Mbps downlink/uplink
Maximum Distance	1800m
Technology	Broadband over Power Lines (BPL)
Interference Prevention	IEEE 1901-2010 Inter-System Protocol ISP

MODELS

TSC5Tlxx-IP	New Generation Stainless Steel FIXED IP thermal camera station, 3-axis mounting bracket, PoE
TSC5Tlxx-IP-008	New Generation Stainless Steel FIXED IP thermal camera station, WITHOUT HEATER, 3-axis mounting bracket, PoE
TSC6Tlxx-IP	New Generation Stainless Steel FIXED IP thermal camera station, 3-axis mounting bracket, 24VAC/DC
TSC7Tlxx-IP	New Generation Stainless Steel FIXED IP thermal camera station, 3-axis mounting bracket, 100-240VAC
TSC6Tlxx-SM	New Generation Stainless Steel FIXED IP thermal camera station, SM FO media converter, 3-axis mounting bracket, 24VAC/DC
TSC7Tlxx-SM	New Generation Stainless Steel FIXED IP thermal camera station, SM FO media converter, 3-axis mounting bracket, 100-240VAC

For IP over COAXIAL converter replace the suffix "SM" with "CX"

- All the above models include sunshield and heater (except for model with suffix -008)

- To order the required camera configuration, please replace "Tlxx" with the number indicated in the table below.

CAMERA MODEL SELECTION (TlXX)

	640x512	
	9Hz	25Hz
9.1mm	Tl22	Tl32
13mm	Tl23	Tl33
19mm	Tl24	Tl34
25mm	Tl25	Tl35
35mm	Tl26	Tl36
55mm*	Tl27	Tl37

*This lens is not available in the configuration with IP over COAXIAL converter

PRE-ASSEMBLED CABLE TAILS

SAUCCT3-A	3 meters composite cable tail (power, CAT6A, data) with two M20 nickel-plated brass glands.
SAUCCTF3-C	3 meters composite cable tail (power, data, fiber optic) with two M20 nickel-plated brass glands. Fiber termination: SC.
SAUCCT5-A	5 meters composite cable tail (power, CAT6A, data) with two M20 nickel-plated brass glands.
SAUCCTF5-C	5 meters composite cable tail (power, data, fiber optic) with two M20 nickel-plated brass glands. Fiber termination: SC.
SAUCCT10-A	10 meters composite cable tail (power, CAT6A, data) with two M20 nickel-plated brass glands.
SAUCCTF10-C	10 meters composite cable tail (power, data, fiber optic) with two M20 nickel-plated brass glands. Fiber termination: SC.

ACCESSORIES

SSPM-S	Pole mount adapter
---------------	--------------------

DIMENSIONS

