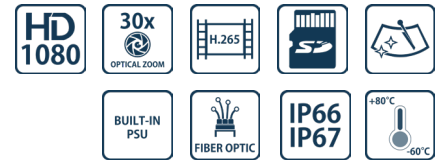
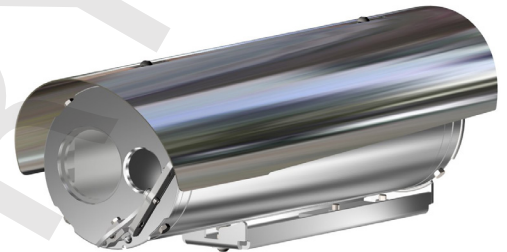


## INNO DUAL VISIBLE & THERMAL

INNOVATIVE STAINLESS STEEL THERMAL DAY/NIGHT AND THERMAL DUAL CAMERA STATION

SAFE AREA

- **INNOVATIVE PRODUCT, BEST IN CLASS TECHNOLOGY**
- AISI316L STAINLESS STEEL CONSTRUCTION
- OPERATING TEMPERATURE -60°C +60°C (+75°C PEAK)
- VISIBLE: 2MP, 30X AUTOFOCUS OPTICAL ZOOM
- THERMAL: 640X512 RESOLUTION, 9HZ OR 25HZ, LWIR
- INTEGRATED WINDOW WIPER (VISIBLE)
- EDGE RECORDING
- IP66/67
- OPTIONAL BUILT-IN FIBER MEDIA CONVERTER
- OPTIONAL BUILT-IN 120VAC OR 230VAC POWER SUPPLY



### TECHNICAL SPECIFICATIONS



#### GENERAL & MECHANICAL

<b>Dimensions</b>	See dimensions drawings
<b>Operating Temperature</b>	-60° +60°C, +75°C peak (-76°F +140°F, +167°F peak)
<b>Construction</b>	AISI316L Stainless Steel
<b>Finish</b>	Electro-polished
<b>Window</b>	Dual window. Thermal: Germanium HC coated 27mm
<b>Mounting</b>	2x M6, centre to centre 63.5mm
<b>Cable entries</b>	2x M20 x1,5, nickel plated brass cable glands included
<b>Wiper</b>	Yes (visible)
<b>Weight</b>	Unit: 5 Kg / Package: 6.5 Kg

#### ELECTRICAL

<b>Temperature Climatization</b>	T[°C] ON = 12 ± 4°C, T[°C] OFF = 20 ± 3°C
<b>Available voltages</b>	24VAC, 120VAC, 230VAC (+/-10%) 24VDC or PoE available on request
<b>Power consumption</b>	40W MAX

#### CERTIFICATIONS

<b>Ingress Protection</b>	EN 60529 (IP66/IP67)
<b>EMC</b>	EN 55035; EN/IEC 61000-6-4; EN/IEC 61000-3-2; EN/IEC 61000-3-3; EN/IEC 61000-6-2; CISPR-32; CISPR-35
<b>LVD</b>	EN/IEC 62368-1
<b>RoHS</b>	2011/65/EU + 2015/863/EU (RoHS 3)
<b>WEEE</b>	2012/19/EU

#### VISIBLE CAMERA

<b>Sensor</b>	1/2.8" Sony Exmor CMOS, 2MP
<b>Resolution</b>	1920x1080, 2MP
<b>Compression</b>	H.265/H.264/MJPEG
<b>Streaming</b>	1080P@30fps
<b>Frame Rate</b>	≤30fps
<b>Focus Settings</b>	Auto/Manual/Semi-Auto
<b>Sensitivity</b>	Color: 0.005 lux, F1.5; B/W: 0.0005 lux, F1.5

<b>Shutter Speed</b>	1/3 to 1/30000s
<b>Optical Filter</b>	Automatically removable IR-cut filter
<b>White Balance</b>	Auto/Manual/Indoor/Outdoor/ATW/Sodium Lamp/ Natural/Street Lamp/One Push
<b>Dynamic range</b>	WDR
<b>Lens</b>	30x Autofocus Optical Zoom, 16x Digital Zoom, 4.7-141mm
<b>FOV</b>	Horizontal: 61.2° (Wide), 2.2° (Tele) Vertical: 36.8° (Wide), 1.2° (Tele)
<b>Analytics</b>	Tripwire, Intrusion, Loitering, etc.
<b>Image settings</b>	Saturation, Brightness, Contrast, Sharpness, Gamma
<b>Event Triggers</b>	Motion Detection, Tamper Detection, Scene Changing, Audio Detection, Network, Illegal Access
<b>Event Actions</b>	External Output Activation
<b>Edge Recording</b>	microSD (card not provided)
<b>Gain</b>	AGC
<b>SNR</b>	>55dB
<b>Noise Reduction</b>	2D/3D
<b>Image Stabilization</b>	EIS
<b>Defog</b>	Electronic-defog

#### THERMAL CAMERA

<b>Sensor</b>	VOx Microbolometer, 12µm, uncooled
<b>Resolution</b>	640x512 pixels
<b>Spectral Band</b>	LWIR 8-14µm
<b>Compression</b>	H.265/H.264/MJPEG
<b>Streaming</b>	≤25fps
<b>Frame Rate</b>	9HZ or 25HZ
<b>Sensitivity</b>	≤50mK
<b>Temperature Measurement</b>	Accuracy ±3°C / ±3%, range -20~150°C or 0°C~550°C (High temperature mode)
<b>Image settings</b>	White heat, black heat, fusion, rainbow, etc

## INNOVATIVE STAINLESS STEEL THERMAL CAMERA STATION

### NETWORK

<b>Interface</b>	100BASE-TX/1000BASE-T or 100BASE-FX/1000BASE-X (fiber)
<b>ONVIF</b>	ONVIF compliant
<b>Protocols</b>	RTP, RTSP, HTTP, HTTPS, TCP, UDP

### FIBER MEDIA CONVERTER

<b>Interface</b>	100 Base-FX/1000BASE-X
<b>Cabling</b>	Singlemode (9/125 μm) /two fibers/SC connector
<b>Maximum Distance</b>	20km
<b>Wavelength</b>	1310 nm

### IP OVER COAXIAL CONVERTER

<b>Interface</b>	10/100 Base-TX over Coaxial Cable
<b>Bandwidth</b>	Up to 95Mbps downlink/uplink
<b>Maximum Distance</b>	1800m
<b>Technology</b>	Broadband over Power Lines (BPL)
<b>Interference Prevention</b>	IEEE 1901-2010 Inter-System Protocol ISP

### MODELS

<b>TSFD1TVS30-TxxW-IP-M</b>	New Generation stainless steel FIXED IP DUAL camera station, 2MP 30x (visible), 640x512 (thermal), 24VAC
<b>TSFD2TVS30-TxxW-IP-M</b>	New Generation stainless steel FIXED IP DUAL camera station, 2MP 30x (visible), 640x512 (thermal), 120VAC
<b>TSFD3TVS30-TxxW-IP-M</b>	New Generation stainless steel FIXED IP DUAL camera station, 2MP 30x (visible), 640x512 (thermal), 230VAC
<b>TSFD1TVS30-TxxW-SM-M</b>	New Generation stainless steel FIXED IP DUAL camera station, 2MP 30x (visible), 640x512 (thermal), SM FO media converter, 24VAC
<b>TSFD2TVS30-TxxW-SM-M</b>	New Generation stainless steel FIXED IP DUAL camera station, 2MP 30x (visible), 640x512 (thermal), SM FO media converter, 120VAC
<b>TSFD3TVS30-TxxW-SM-M</b>	New Generation stainless steel FIXED IP DUAL camera station, 2MP 30x (visible), 640x512 (thermal), SM FO media converter, 230VAC

- All the above models include sunshield, heater and wiper (for visible camera)  
- To order the required camera configuration, please replace "TVS30-xx" with the number indicated in the table below

### CAMERA MODEL SELECTION (TVS30-XX)

	9Hz	25Hz
9mm	TVS30-22	TVS30-32
13mm	TVS30-23	TVS30-33
19mm	TVS30-24	TVS30-34
25mm	TVS30-25	TVS30-35

### PRE-ASSEMBLED CABLE TAILS

<b>SAUCT3-A</b>	3 meters composite cable tail (power, CAT6A, data) with two M20 nickel-plated brass glands.
<b>SAUCTF3-C</b>	3 meters composite cable tail (power, data, fiber optic) with two M20 nickel-plated brass glands. Fiber termination: SC.
<b>SAUCT5-A</b>	5 meters composite cable tail (power, CAT6A, data) with two M20 nickel-plated brass glands.
<b>SAUCTF5-C</b>	5 meters composite cable tail (power, data, fiber optic) with two M20 nickel-plated brass glands. Fiber termination: SC.
<b>SAUCT10-A</b>	10 meters composite cable tail (power, CAT6A, data) with two M20 nickel-plated brass glands.
<b>SAUCTF10-C</b>	10 meters composite cable tail (power, data, fiber optic) with two M20 nickel-plated brass glands. Fiber termination: SC.

### ACCESSORIES

<b>SSBK-S</b>	Wall mounting bracket
<b>SSPM-S</b>	Pole mount adapter for SSBK-S
<b>SSPTM-S</b>	Top pole mount adapter
<b>SSBKLN-S</b>	Ceiling mounting bracket

## DIMENSIONS

