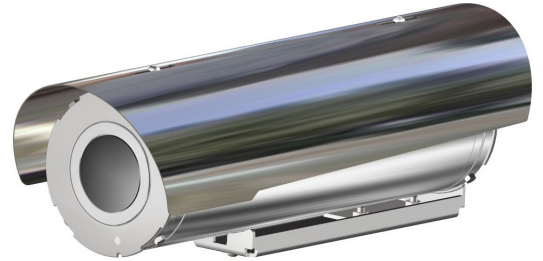


- **INNOVATIVE PRODUCT, BEST IN CLASS TECHNOLOGY**
- AISI316L STAINLESS STEEL CONSTRUCTION
- 640X512 RESOLUTION, 9HZ OR 25HZ, LWIR
- WIDE RANGE OF FIXED LENSES
- GERMANIUM WINDOW
- IP66/67
- OPTIONAL BUILT-IN FIBER MEDIA CONVERTER
- OPTIONAL BUILT-IN IP OVER COAXIAL CONVERTER
- OPTIONAL BUILT-IN 120VAC OR 230VAC POWER SUPPLY



TECHNICAL SPECIFICATIONS

GENERAL & MECHANICAL

Dimensions	See dimensions drawings
Operating Temperature	-60° +60°C, +75°C peak (-76°F +140°F, +167°F peak)
Construction	AISI316L Stainless Steel
Finish	Electro-polished
Window	Germanium HC coated 75mm
Mounting	2x M6, centre to centre 63.5mm
Cable entries	2x M20 x1,5, nickel plated brass cable glands included
Weight	Unit: 5 Kg / Package: 6.5 Kg

ELECTRICAL

Temperature Climatization	T[°C] ON = 12 ± 4°C, T[°C] OFF = 20 ± 3°C
Available voltages	24VAC, 120VAC, 230VAC (+/-10%) 24VDC or PoE available on request
Power consumption	40W MAX

CERTIFICATIONS

Ingress Protection	EN 60529 (IP66/IP67)
IK Classification	IK10 on all sides except for the front window
EMC	EN 55032; EN 55035; EN/IEC 61000-3-2; EN/IEC 61000-3-3; EN/IEC 61000-6-2; EN/IEC 61000-6-4; CISPR-32; CISPR-35
LVD	EN/IEC 62368-1
RoHS	2011/65/EU + 2015/863/EU (RoHS 3)
WEEE	2012/19/EU

CAMERA (THERMAL)

Sensor	VOx Microbolometer, 12µm, uncooled
Resolution	640x512 pixels
Spectral Band	LWIR 8-14µm
Compression	H.264, MJPEG
Frame Rate	9Hz (9fps) or 25Hz (25fps)
Focus Settings	Fixed manual focus, minimum focus distance

Sensitivity	≤50mK@25°, F/1.0
Shutter type	NUC
Fire Detection	Yes
Image settings	Black hot, White hot, Color Palette (18 types)
Event Actions	Recording/Capture/Sending mail/PTZ linkage/Alarm output
Analytics	Line intrusion, cross-border, and region intrusion
Alarm Trigger	Network disconnection, IP address conflict, full memory, memory error, illegal access and abnormal detection
Edge Recording	Yes
Gain	- Digital Filter and Imaging Denoising - Digital Detail Enhancement

Lens	FOV (HxV)	Min Focus Distance
	640x512	
9.1mm	48.6°x38.6°, F1.0	0.5m
13mm	32.9°x26.6°, F1.0	0.5m
19mm	22.9°x18.4°, F1.0	0.5m
25mm	17.4°x14.0°, F1.0	1m
35mm	12.5°x10.0°, F1.0	1.5m
55mm	8.6°x6.4°, F1.0	2m

NETWORK

Interface	100BASE-TX/1000BASE-T or 100BASE-FX/1000BASE-X (fiber)
Security	- User Authentication/HTTPS
ONVIF	ONVIF S
Protocols	- TCP, UDP, RTP, RTSP, RTCP, HTTP, HTTPS, ICMP, FTP, SMTP, DHCP, IGMP, QoS, NTP, DNS

INNOVATIVE STAINLESS STEEL THERMAL CAMERA STATION

FIBER MEDIA CONVERTER

Interface	100 Base-FX/1000BASE-X
Cabling	Singlemode (9/125 μm) /two fibers/SC connector
Maximum Distance	20km
Wavelength	1310 nm

IP OVER COAXIAL CONVERTER

Interface	100BASE-TX or 100BASE-FX/1000BASE-X (fiber)
Bandwidth	Up to 95Mbps downlink/uplink
Maximum Distance	1800m
Technology	Broadband over Power Lines (BPL)
Interference Prevention	IEEE 1901-2010 Inter-System Protocol ISP

MODELS

TSF1Tlxx-IP-M	New Generation Stainless Steel FIXED Thermal Camera Station. 24VAC
TSF2Tlxx-IP-M	New Generation Stainless Steel FIXED Thermal Camera Station. 120VAC
TSF3Tlxx-IP-M	New Generation Stainless Steel FIXED Thermal Camera Station. 230VAC
TSF1Tlxx-SM-M	New Generation Stainless Steel FIXED Thermal Camera Station, SM FO media converter. 24VAC
TSF2Tlxx-SM-M	New Generation Stainless Steel FIXED Thermal Camera Station, SM FO media converter. 120VAC
TSF3Tlxx-SM-M	New Generation Stainless Steel FIXED Thermal Camera Station, SM FO media converter. 230VAC
TSF1Tlxx-CX-M	New Generation Stainless Steel FIXED Thermal Camera Station, IP over COAXIAL converter. 24VAC
TSF2Tlxx-CX-M	New Generation Stainless Steel FIXED Thermal Camera Station, IP over COAXIAL converter. 120VAC
TSF3Tlxx-CX-M	New Generation Stainless Steel FIXED Thermal Camera Station, IP over COAXIAL converter. 230VAC

To order the required camera configuration, please replace "Tlxx" with the number indicated in the table below

CAMERA MODEL SELECTION (TlXX)

	640x512	
	9Hz	25Hz
9.1mm	Tl22	Tl32
13mm	Tl23	Tl33
19mm	Tl24	Tl34
25mm	Tl25	Tl35
35mm	Tl26	Tl36
55mm	Tl27	Tl37

PRE-ASSEMBLED CABLE TAILS

SAUCT3-A	3 meters composite cable tail (power, CAT6A, data) with two M20 nickel-plated brass glands.
SAUCTF3-C	3 meters composite cable tail (power, data, fiber optic) with two M20 nickel-plated brass glands. Fiber termination: SC.
SAUCT5-A	5 meters composite cable tail (power, CAT6A, data) with two M20 nickel-plated brass glands.
SAUCTF5-C	5 meters composite cable tail (power, data, fiber optic) with two M20 nickel-plated brass glands. Fiber termination: SC.
SAUCT10-A	10 meters composite cable tail (power, CAT6A, data) with two M20 nickel-plated brass glands.
SAUCTF10-C	10 meters composite cable tail (power, data, fiber optic) with two M20 nickel-plated brass glands. Fiber termination: SC.

ACCESSORIES

SSBK-S	Wall mounting bracket
SSPM-S	Pole mount adapter for SSBK-S
SSPTM-S	Top pole mount adapter
SSBKCLN-S	Ceiling mounting bracket

DIMENSIONS

