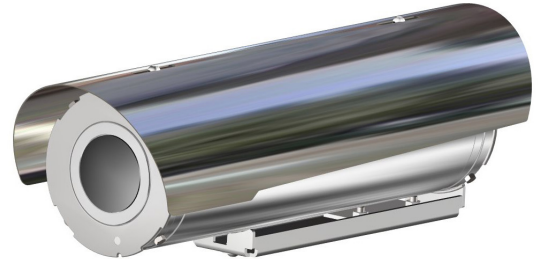


- **INNOVATIVE PRODUCT, BEST IN CLASS TECHNOLOGY**
- AISI316L STAINLESS STEEL CONSTRUCTION
- 640X512 RESOLUTION, 9HZ OR 30HZ, LWIR
- THERMAL RADIOMETRIC ANALYTICS OPTIONAL
- WIDE RANGE OF FIXED LENSES
- GERMANIUM WINDOW
- IP66/67
- OPTIONAL BUILT-IN FIBER MEDIA CONVERTER
- OPTIONAL BUILT-IN IP OVER COAXIAL CONVERTER
- OPTIONAL BUILT-IN 120VAC OR 230VAC POWER SUPPLY



## TECHNICAL SPECIFICATIONS

### GENERAL & MECHANICAL

<b>Dimensions</b>	See dimensions drawings
<b>Operating Temperature</b>	-60° +60°C, +75°C peak (-76°F +140°F, +167°F peak)
<b>Construction</b>	AISI316L Stainless Steel
<b>Finish</b>	Electro-polished
<b>Window</b>	Germanium HC coated 75mm
<b>Mounting</b>	2x M6, centre to centre 63.5mm
<b>Cable entries</b>	2x M20 x1,5, nickel plated brass cable glands included
<b>Weight</b>	Unit: 5 Kg / Package: 6.5 Kg

### ELECTRICAL

<b>Temperature Climatization</b>	T[°C] ON = 12 ± 4°C, T[°C] OFF = 20 ± 3°C
<b>Available voltages</b>	24VAC, 120VAC, 230VAC (+/-10%) 24VDC or PoE available on request
<b>Power consumption</b>	40W MAX

### CERTIFICATIONS

<b>Ingress Protection</b>	EN 60529 (IP66/IP67)
<b>IK Classification</b>	IK10 on all sides except for the front window
<b>EMC</b>	EN 55032; EN 55035; EN/IEC 61000-3-2; EN/IEC 61000-3-3; EN/IEC 61000-6-2; EN/IEC 61000-6-4; CISPR-32; CISPR-35
<b>LVD</b>	EN/IEC 62368-1
<b>RoHS</b>	2011/65/EU + 2015/863/EU (RoHS 3)
<b>WEEE</b>	2012/19/EU

### CAMERA (THERMAL)

<b>Sensor</b>	VOx Microbolometer, 17µm, uncooled
<b>Resolution</b>	640x512 pixels
<b>Spectral Band</b>	LWIR 7.5-13.5µm
<b>Compression</b>	Two independent channels of H.264 / H.265 or MJPEG
<b>Streaming</b>	Up to two streams
<b>Frame Rate</b>	9Hz (9fps) or 30Hz (30fps)

<b>Focus Settings</b>	Athermalized, focus-free
<b>Sensitivity</b>	<25mK (35mK Radiometric version) @ f/1.0
<b>Shutter type</b>	SSN - Silent Shutterless NUC™ for continuous image uniformity improvement
<b>Edge Recording</b>	microSD, up to 512GB (card not provided)
<b>Gain</b>	DDE Digital Detail Enhancement™
<b>Analytics</b>	Intrusion detection, region entrance, fence trespassing. Hot spots, fire detection (only for radiometric version)

### LENS (THERMAL)

	FOV (HxV)	
	TTxx	TRxx (Radiometric)
7.5mm	90°x69°, F1.2	-
9mm	69°x56°, F1.4	69°x56°, F1.4
13mm	44°x36°, F1.0	44°x36°, F1.0
19mm	32°x26, F1.0	-
25mm	25°x18°, F1.1	25°x18°, F1.1
35mm	17°x14°, F1.1	17°x14°, F1.1
60mm	10°x8.2°, F1.2	-

### NETWORK

<b>Interface</b>	100 Base-FX/1000BASE-X
<b>Security</b>	User Authentication/HTTPS
<b>ONVIF</b>	ONVIF profile S/G/T
<b>Protocols</b>	IPv4/v6, TCP, UDP, RTSP, HTTP, HTTPS, FTP, DHCP, NTP

### FIBER MEDIA CONVERTER

<b>Interface</b>	100 Base-FX/1000BASE-X
<b>Cabling</b>	Singlemode (9/125 µm) /two fibers/SC connector
<b>Maximum Distance</b>	20km
<b>Wavelength</b>	1310 nm

### IP OVER COAXIAL CONVERTER

<b>Interface</b>	100BASE-TX or 100BASE-FX/1000BASE-X (fiber)
<b>Bandwidth</b>	Up to 95Mbps downlink/uplink
<b>Maximum Distance</b>	1800m
<b>Technology</b>	Broadband over Power Lines (BPL)
<b>Interference Prevention</b>	IEEE 1901-2010 Inter-System Protocol ISP

### MODELS

<b>TSF1Tyxx-IP-M</b>	New Generation Stainless Steel FIXED Thermal Camera Station. 24VAC
<b>TSF2Tyxx-IP-M</b>	New Generation Stainless Steel FIXED Thermal Camera Station. 120VAC
<b>TSF3Tyxx-IP-M</b>	New Generation Stainless Steel FIXED Thermal Camera Station. 230VAC
<b>TSF1Tyxx-SM-M</b>	New Generation Stainless Steel FIXED Thermal Camera Station, SM FO media converter. 24VAC
<b>TSF2Tyxx-SM-M</b>	New Generation Stainless Steel FIXED Thermal Camera Station, SM FO media converter. 120VAC
<b>TSF3Tyxx-SM-M</b>	New Generation Stainless Steel FIXED Thermal Camera Station, SM FO media converter. 230VAC
<b>TSF1Tyxx-CX-M</b>	New Generation Stainless Steel FIXED Thermal Camera Station, IP over COAXIAL converter. 24VAC
<b>TSF2Tyxx-CX-M</b>	New Generation Stainless Steel FIXED Thermal Camera Station, IP over COAXIAL converter. 120VAC
<b>TSF3Tyxx-CX-M</b>	New Generation Stainless Steel FIXED Thermal Camera Station, IP over COAXIAL converter. 230VAC

TTxx = camera with Analytics

TRxx = camera with Analytics and Radiometry

To order the required camera configuration, please replace "Tyxx" with the number indicated in the table on the side

### CAMERA MODEL SELECTION

	TTxx (Analytics only)		TRxx (Analytics & Radiometry)	
	9Hz	30Hz	9Hz	30Hz
7.5mm	TT21	TT31	-	-
9mm	TT22	TT32	TR22	TR32
13mm	TT23	TT33	TR23	TR33
19mm	TT24	TT34	-	-
25mm	TT25	TT35	TR25	TR35
35mm	TT26	TT36	TR26	TR36
60mm	TT28	TT38	-	-

### PRE-ASSEMBLED CABLE TAILS

<b>SAUCCT3-A</b>	3 meters composite cable tail (power, CAT6A, data) with two M20 nickel-plated brass glands.
<b>SAUCCTF3-C</b>	3 meters composite cable tail (power, data, fiber optic) with two M20 nickel-plated brass glands. Fiber termination: SC.
<b>SAUCCT5-A</b>	5 meters composite cable tail (power, CAT6A, data) with two M20 nickel-plated brass glands.
<b>SAUCCTF5-C</b>	5 meters composite cable tail (power, data, fiber optic) with two M20 nickel-plated brass glands. Fiber termination: SC.
<b>SAUCCT10-A</b>	10 meters composite cable tail (power, CAT6A, data) with two M20 nickel-plated brass glands.
<b>SAUCCTF10-C</b>	10 meters composite cable tail (power, data, fiber optic) with two M20 nickel-plated brass glands. Fiber termination: SC.

### ACCESSORIES

<b>SSBK-S</b>	Wall mounting bracket
<b>SSPM-S</b>	Pole mount adapter for SSBK-S
<b>SSPTM-S</b>	Top pole mount adapter
<b>SSBKCLN-S</b>	Ceiling mounting bracket

## DIMENSIONS

