

- **INNOVATIVE PRODUCT, BEST IN CLASS TECHNOLOGY**
- AISI316L STAINLESS STEEL CONSTRUCTION
- INTEGRATED WINDOW WIPER
- VERY LOW POWER CONSUMPTION
- EASY MAINTENANCE
- IP66/67
- OPTIONAL BUILT-IN FIBER MEDIA CONVERTER
- OPTIONAL BUILT-IN IP OVER COAXIAL CONVERTER
- OPTIONAL BUILT-IN 120VAC OR 230VAC POWER SUPPLY



## TECHNICAL SPECIFICATIONS

### GENERAL & MECHANICAL

<b>Dimensions</b>	See dimensions drawings
<b>Operating Temperature</b>	-60° +60°C, +75°C peak (-76°F +140°F, +167°F peak)
<b>Construction</b>	AISI316L Stainless Steel
<b>Finish</b>	Electro-polished
<b>Mounting</b>	4x Ø11 on 195 PCD
<b>Cable entries</b>	1x M25x1,5 (second cable entry available on demand)
<b>Wiper</b>	Yes
<b>Pan Angle</b>	360° (continuous rotation)
<b>Pan Speed</b>	0 – 40°/second
<b>Pan Torque</b>	20Nm (limited with safety device)
<b>Tilt Angle</b>	180° (+/-90°)
<b>Tilt Speed</b>	0 – 20°/second
<b>Tilt Torque</b>	20Nm (limited with safety device)
<b>Rotation angle</b>	Electronically adjustable limit switches
<b>Backlash</b>	<0,1°
<b>Max preset accuracy</b>	0,04°
<b>Control protocol</b>	Pelco D (RS485)
<b>Weight</b>	Unit: 29kg / Package: 34kg

### ELECTRICAL

<b>Temperature Climatization</b>	
- <b>Camera Housing</b>	T[°C] ON = 12 ± 4°C, T[°C] OFF = 20 ± 3°C
- <b>Gear motors</b>	Electronically controlled de-icing
<b>Available voltages</b>	24VAC, 120VAC, 230VAC (+/-10%) 24VDC available on request
<b>Power consumption</b>	10W min (stationary and de-icing/heater/wiper off), 130W MAX

### CERTIFICATIONS

<b>Ingress Protection</b>	EN 60529 (IP66/IP67)
<b>EMC</b>	EN 55032; EN 55035; EN/IEC 61000-3-2; EN/IEC 61000-3-3; EN/IEC 61000-6-2; EN/IEC 61000-6-4; CISPR-32; CISPR-35
<b>LVD</b>	EN/IEC 62368-1
<b>RoHS</b>	2011/65/EU + 2015/863/EU (RoHS 3)
<b>WEEE</b>	2012/19/EU

### FIBER MEDIA CONVERTER

<b>Interface</b>	100 Base-FX/1000BASE-X
<b>Cabling</b>	Singlemode (9/125 µm) /two fibers/SC connector
<b>Maximum Distance</b>	20km
<b>Wavelength</b>	1310 nm

### IP OVER COAXIAL CONVERTER

<b>Interface</b>	10/100 Base-TX over Coaxial Cable
<b>Bandwidth</b>	Up to 95Mbps downlink/uplink
<b>Maximum Distance</b>	1800m
<b>Technology</b>	Broadband over Power Lines (BPL)
<b>Interference Prevention</b>	IEEE 1901-2010 Inter-System Protocol ISP

### MODELS

<b>TSP1-S</b>	New Generation Stainless Steel PTZ IP camera housing, 24VAC
<b>TSP2-S</b>	New Generation Stainless Steel PTZ IP camera housing, 120VAC
<b>TSP3-S</b>	New Generation Stainless Steel PTZ IP camera housing, 230VAC

- All the above PTZ camera housing include wiper and sunshield.  
- Built-in Fiber media converter or IP over Coaxial converter available upon request.

INNOVATIVE STAINLESS STEEL PTZ CAMERA STATION

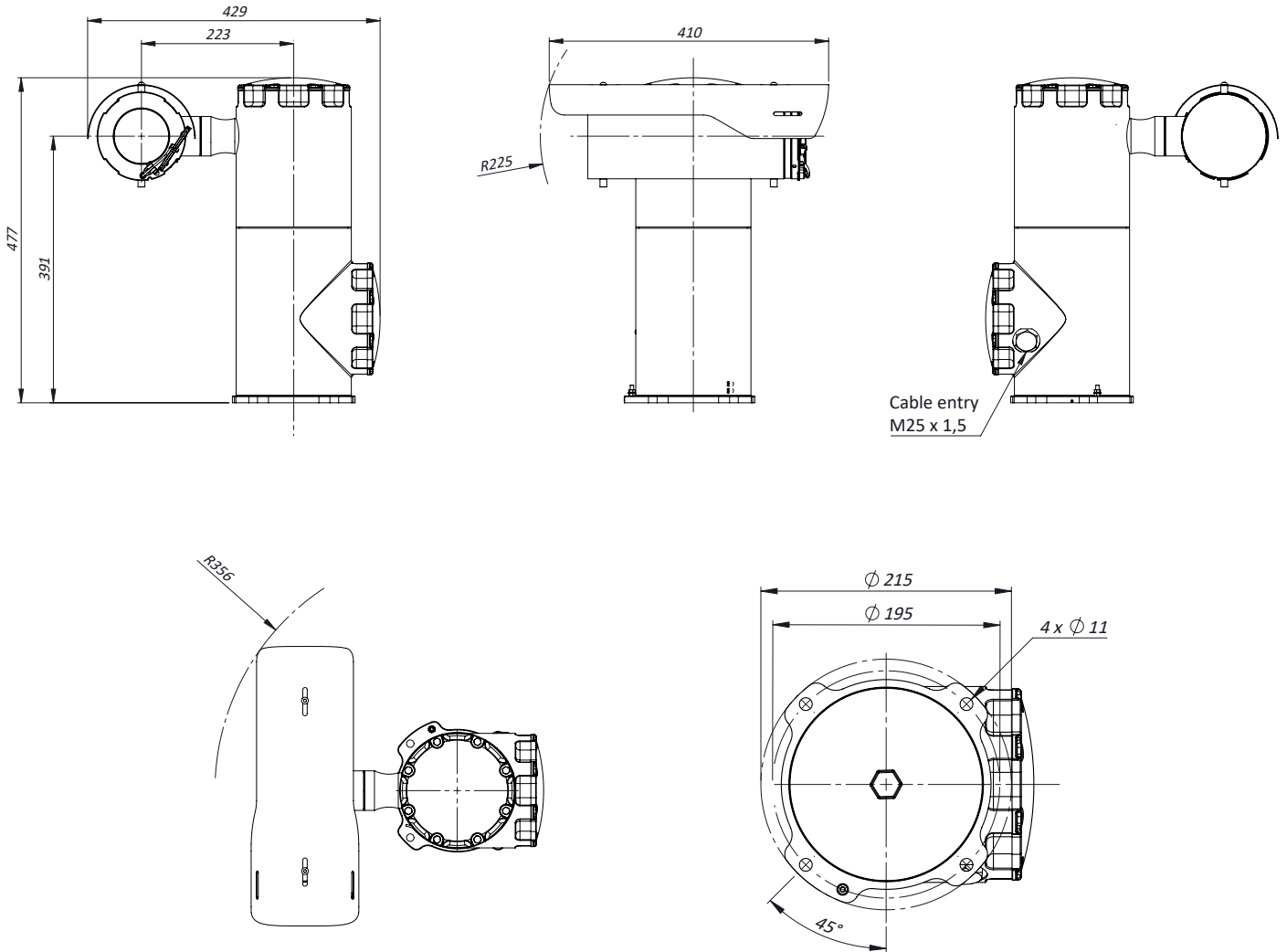
**PRE-ASSEMBLED CABLE TAILS**

<b>SAUCCT3-B</b>	3 meters composite cable tail (power, CAT6A, data) with two M25 nickel-plated brass glands
<b>SAUCCTF3-D</b>	3 meters composite cable tail (power, data, fiber optic) with two M25 nickel-plated brass glands. Fiber termination: SC
<b>SAUCCT5-B</b>	5 meters composite cable tail (power, CAT6A, data) with two M25 nickel-plated brass glands
<b>SAUCCTF5-D</b>	5 meters composite cable tail (power, data, fiber optic) with two M25 nickel-plated brass glands. Fiber termination: SC
<b>SAUCCT10-B</b>	10 meters composite cable tail (power, CAT6A, data) with two M25 nickel-plated brass glands
<b>SAUCCTF10-D</b>	10 meters composite cable tail (power, data, fiber optic) with two M25 nickel-plated brass glands. Fiber termination: SC

**ACCESSORIES**

<b>SSBK-L</b>	Wall mounting bracket
---------------	-----------------------

DIMENSIONS



**MAX INTERNAL USABLE AREA**

Model	Max internal dimensions [mm]	Max usable internal diameter [mm]
TSP-S	80x80x192	96