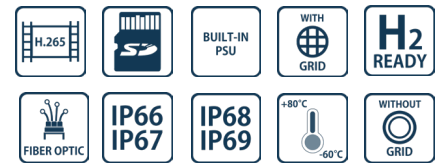
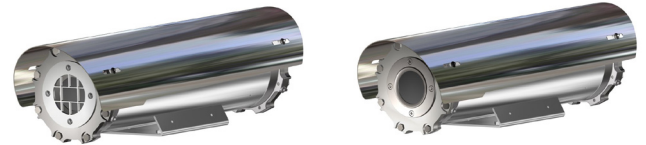


- **INNOVATIVE PRODUCT, BEST IN CLASS TECHNOLOGY**
- ATEX/IECEX/UKCA/INMETRO/ECAS EX EXPLOSIONPROOF THERMAL CAMERA FOR HAZARDOUS LOCATIONS
- AISI316L STAINLESS STEEL CONSTRUCTION
- CERTIFICATION TEMPERATURE -60°C +80°C
- 640X512 RESOLUTION, 9HZ OR 30HZ, LWIR
- THERMAL RADIOMETRIC ANALYTICS OPTIONAL
- WIDE RANGE OF FIXED LENSES
- GERMANIUM WINDOW
- IP66/67/68/69, NEMA 4X
- OPTIONAL BUILT-IN FIBER MEDIA CONVERTER
- OPTIONAL BUILT-IN IP OVER COAXIAL CONVERTER
- OPTIONAL BUILT-IN 120VAC OR 230VAC POWER SUPPLY
- H2-READY



TECHNICAL SPECIFICATIONS

GENERAL & MECHANICAL

Dimensions	See dimensions drawings
Operating Temperature	-60° +60°C, +75°C peak (-76°F +140°F, +167°F peak)
Construction	AISI316L Stainless Steel
Finish	Electro-polished
Window	Germanium HC coated 50mm
Mounting	4x M5 on 101,6 PCD 4x M6 on 90x130
Cable entries	2x M25 x1,5
Weight	Unit: 10.5 Kg / Package: 12 Kg (version with wiper)

ELECTRICAL

Temperature Climatization	T[°C] ON = 12 ± 4°C, T[°C] OFF = 20 ± 3°C
Available voltages	24VAC, 120VAC, 230VAC (+/-10%) 24VDC or PoE available on request
Power consumption	40W MAX

CERTIFICATIONS

Ingress Protection	EN 60529 (IP66/IP67/IP68/IP69), NEMA 4X
IK Classification	IK10 on all sides except for the front glass, which is rated IK08
Rating	II 2 G Ex db IIC T6/5/4 Gb -60°C ≤ Tamb ≤ +60/75/80°C II 2 D Ex tb IIIC T85/100/135°C Db -60°C ≤ Tamb ≤ +60/75/80°C
ATEX/UKCA Standards	EN 60079-0; EN 60079-1; EN 60079-31
IECEX Standards	IEC 60079-0; IEC 60079-1; IEC 60079-31
ECAS Ex Standards	UAE.S IEC 60079-0, UAE.S IEC 60079-1, UAE.S IEC 60079-31
INMETRO	ABNT NBR IEC 60079-0; ABNT NBR IEC 60079-1; ABNT NBR IEC 60079-31
EMC	EN 55032; EN 55035; EN/IEC 61000-3-2; EN/IEC 61000-3-3; EN/IEC 61000-6-2; EN/IEC 61000-6-4; CISPR-32; CISPR-35
LVD	EN/IEC 62368-1
RoHS	2011/65/EU + 2015/863/EU (RoHS 3)
WEEE	2012/19/EU

CAMERA (THERMAL)

Sensor	VOx Microbolometer, 17µm, uncooled
Resolution	640x512 pixels
Spectral Band	LWIR 7.5-13.5µm
Compression	Two independent channels of H.264 / H.265 or MJPEG
Streaming	Up to two streams
Frame Rate	9Hz (9fps) or 30Hz (30fps)
Focus Settings	Athermalized, focus-free
Sensitivity	<25mK (35mK Radiometric version) @ f/1.0
Shutter type	SSN - Silent Shutterless NUC™ for continuous image uniformity improvement
Edge Recording	microSD, up to 512GB (card not provided)
Gain	DDE Digital Detail Enhancement™
Analytics	Intrusion detection, region entrance, fence trespassing. Hot spots, fire detection (only for radiometric version)

LENS (THERMAL)

	FOV (HxV)	
	TTxx	TRxx (Radiometric)
7.5mm	90°x69°, F1.2	-
9mm	69°x56°, F1.4	69°x56°, F1.4
13mm	44°x36°, F1.0	44°x36°, F1.0
19mm	32°x26, F1.0	-
25mm	25°x18°, F1.1	25°x18°, F1.1
35mm	17°x14°, F1.1	17°x14°, F1.1
60mm	10°x8.2°, F1.2	-

NETWORK

Interface	10/100 Mbps Ethernet
ONVIF	ONVIF profile S/G/T
Protocols	IPv4/v6, TCP, UDP, RTSP, HTTP, HTTPS, FTP, DHCP, NTP

FIBER MEDIA CONVERTER

Interface	100 Base-FX/1000BASE-X
Cabling	Singlemode (9/125 µm) /two fibers/SC connector
Maximum Distance	20km
Wavelength	1310 nm

IP OVER COAXIAL CONVERTER

Interface	10/100 Base-TX over Coaxial Cable
Bandwidth	Up to 95Mbps downlink/uplink
Maximum Distance	1800m
Technology	Broadband over Power Lines (BPL)
Interference Prevention	IEEE 1901-2010 Inter-System Protocol ISP

MODELS

TXF1Tyxx-IP-M	New Generation Explosionproof FIXED Thermal Camera Station. With front grid, 24VAC
TXF2Tyxx-IP-M	New Generation Explosionproof FIXED Thermal Camera Station. With front grid, 120VAC
TXF3Tyxx-IP-M	New Generation Explosionproof FIXED Thermal Camera Station. With front grid, 230VAC
TXF1Tyxx-SM-M	New Generation Explosionproof FIXED Thermal Camera Station, SM FO media converter. With front grid, 24VAC
TXF2Tyxx-SM-M	New Generation Explosionproof FIXED Thermal Camera Station, SM FO media converter. With front grid, 120VAC
TXF3Tyxx-SM-M	New Generation Explosionproof FIXED Thermal Camera Station, SM FO media converter. With front grid, 230VAC
TXF1Tyxx-CX-M	New Generation Explosionproof FIXED Thermal Camera Station, IP over COAXIAL converter. With front grid, 24VAC
TXF2Tyxx-CX-M	New Generation Explosionproof FIXED Thermal Camera Station, IP over COAXIAL converter. With front grid, 120VAC
TXF3Tyxx-CX-M	New Generation Explosionproof FIXED Thermal Camera Station, IP over COAXIAL converter. With front grid, 230VAC

(+) Gridless version available on request

TTxx = camera with Analytics

TRxx = camera with Analytics and Radiometry

To order the required camera configuration, please replace "Tyxx" with the number indicated in the table on the side

CAMERA MODEL SELECTION

	TTxx (Analytics only)		TRxx (Analytics & Radiometry)	
	9Hz	30Hz	9Hz	30Hz
7.5mm	TT21	TT31	-	-
9mm	TT22	TT32	TR22	TR32
13mm	TT23	TT33	TR23	TR33
19mm	TT24	TT34	-	-
25mm	TT25	TT35	TR25	TR35
35mm	TT26	TT36	TR26	TR36
60mm	TT28	TT38	-	-

PRE-ASSEMBLED CABLE TAILS

EXACCTF3-A	3 meters armored composite cable tail (power, Ethernet, data) with 2x M25 barrier nickel plated brass glands
EXACCTF3-C	3 meters armored composite cable tail (power, data, fiber optic) with 2x M25 barrier nickel plated brass glands. Fiber termination: SC
EXACCTF5-A	5 meters armored composite cable tail (power, Ethernet, data) with 2x M25 barrier nickel plated brass glands
EXACCTF5-C	5 meters armored composite cable tail (power, data, fiber optic) with 2x M25 barrier nickel plated brass glands. Fiber termination: SC
EXACCTF10-A	10 meters armored composite cable tail (power, Ethernet, data) with 2x M25 barrier nickel plated brass glands
EXACCTF10-C	10 meters armored composite cable tail (power, data, fiber optic) with 2x M25 barrier nickel plated brass glands. Fiber termination: SC

ACCESSORIES

SSBK-M	Wall mounting bracket
SSPM-M	Pole mount adapter for SSBK-M
SSPTM-M	Top pole mount adapter

DIMENSIONS

