

NEXT DUAL 4K DAY/NIGHT & THERMAL PTZ CAMERA

INNOVATIVE EXPLOSIONPROOF 4K DAY/NIGHT AND THERMAL PTZ CAMERA STATION

HAZARDOUS AREA

- **INNOVATIVE PRODUCT, BEST IN CLASS TECHNOLOGY**
- ATEX/IECEX/UKCA/INMETRO EXPLOSIONPROOF PTZ FOR HAZARDOUS LOCATIONS
- AISI316L STAINLESS STEEL CONSTRUCTION
- CERTIFICATION TEMPERATURE -60°C +80°C
- VISIBLE: 4K (8MP), H.265, 22X AUTOFOCUS OPTICAL ZOOM
- THERMAL: 640X512 RESOLUTION, 9HZ OR 25HZ, LWIR
- DUAL INDEPENDENT VISIBLE AND THERMAL VIDEO STREAMS
- WIDE RANGE OF THERMAL LENSES
- EIS ELECTRONIC IMAGE STABILIZER (VISIBLE)
- INTEGRATED WINDOW WIPER (VISIBLE)
- VERY LOW POWER CONSUMPTION
- EASY MAINTENANCE
- IP66/67/68/69, NEMA 4X
- OPTIONAL BUILT-IN FIBER MEDIA CONVERTER
- OPTIONAL BUILT-IN 120VAC OR 230VAC POWER SUPPLY
- H2-READY



TECHNICAL SPECIFICATIONS

GENERAL & MECHANICAL

Dimensions	See dimensions drawings
Operating Temperature	-60° +60°C, +75°C peak (-76°F +140°F, +167°F peak)
Construction	AISI316L Stainless Steel
Finish	Electro-polished
Window	Germanium HC coated 50mm (Thermal)
Mounting	4x Ø11 on 195 PCD
Cable entries	1x M25x1,5 (second cable entry available on demand)
Wiper	Yes (visible)
Pan Angle	360° (continuous rotation)
Pan Speed	0 – 40°/second
Pan Torque	20Nm (limited with safety device)
Tilt Angle	180° (+/-90°)
Tilt Speed	0 – 20°/second
Tilt Torque	20Nm (limited with safety device)
Rotation angle	Electronically adjustable limit switches
Backlash	<0,1°
Max preset accuracy	0,04°
Control protocol	Pelco D (RS485)
Weight	Unit: 40 Kg / Package: 45 Kg

ELECTRICAL

Temperature Climatization	
- Camera Housing	T[°C] ON = 12 ± 4°C, T[°C] OFF = 20 ± 3°C
- Gear motors	Electronically controlled de-icing
Available voltages	24VAC, 120VAC, 230VAC (+/-10%) 24VDC available on request
Power consumption	10W min (stationary and de-icing/heater/wiper off), 170W MAX

CERTIFICATIONS

Ingress Protection	EN 60529 (IP66/IP67/IP68/IP69), NEMA 4X
Rating	II 2 G Ex db IIC T6/5/4 Gb -60°C ≤ Tamb ≤ +60/75/80°C II 2 D Ex tb IIIC T85/100/135°C Db -60°C ≤ Tamb ≤ +60/75/80°C
Vibrations and Shock	EN/IEC 60068-2-6; EN/IEC 60068-2-27; DNV-CG-0339
ATEX/UKEX Standards	EN 60079-0; EN 60079-1; EN 60079-31
IECEX Standards	IEC 60079-0; IEC 60079-1; IEC 60079-31
INMETRO	ABNT NBR IEC 60079-0; ABNT NBR IEC 60079-1; ABNT NBR IEC 60079-31
EMC	EN 55032; EN 55035; EN/IEC 61000-3-2; EN/IEC 61000-3-3; EN/IEC 61000-6-2; EN/IEC 61000-6-4; CISPR 32; CISPR 35
LVD	EN/IEC 62368-1
RoHS	2011/65/EU + 2015/863/EU (RoHS 3)
WEEE	2012/19/EU

CAMERA (DAY/NIGHT)

Sensor	1/1.8" Sony Progressive CMOS, 8MP
Resolution	- Up to 3864x2180, 4K (H.264/H.265) - Up to 1920x1080, 2MP (MJPEG)
Compression	H.265/H.264/MJPEG
Streaming	Up to 4 configurable streams
Frame Rate	- 2MP: 60fps (WDR off), 30 fps (WDR on) - 4K: 30fps (H.264/H.265)
Sensitivity	Color: 0.04 lux, B/W: 0.002 lux
Shutter Speed	1 to 1/10000 s
Optical Filter	Automatically removable IR-cut filter
White Balance	Contrast White Balance
Dynamic range	WDR/HDR
Lens	22x Optical Zoom Auto Focus, 10x Digital, focal Length 6.4-138.5 mm
Analytics	Motion Detection/Tampering. OPTIONAL: intrusion detection, wrong direction, object removal, sabotage, loitering, stopped vehicle, object counting

Image settings	Color, Brightness, Sharpness, Contrast, White Balance, Exposure control, 2D/3D Noise Reduction
Event Triggers	External Input, Analytics, Network Failure Detection, Periodical Event, Manual Trigger
Event Actions	External Output Activation
Edge Recording	Micro SD/SDHC/SDXC (card not provided)
Network Storage	Support for recording to NAS
SNR	>50dB
Noise Reduction	3D Motion Compensated Noise Reduction
Iris	P-Iris, Auto-Iris
Image Stabilization	EIS

CAMERA (THERMAL)

Sensor	VOx Microbolometer, 12µm, uncooled
Resolution	640x512 pixels
Spectral Band	LWIR 8-14µm
Compression	H.264, MJPEG
Frame Rate	9Hz (9fps) or 25Hz (25fps)
Focus Settings	Fixed manual focus, minimum focus distance
Sensitivity	≤50mK@25°, F/1.0
Shutter type	NUC
Fire Detection	Yes
Image settings	Black hot, White hot, Color Palette (18 types)
Event Actions	Recording/Capture/Sending mail/PTZ linkage/Alarm output
Analytics	Line intrusion, cross-border, and region intrusion
Alarm Trigger	Network disconnection, IP address conflict, full memory, memory error, illegal access and abnormal detection
Edge Recording	Yes
Gain	- Digital Filter and Imaging Denoising - Digital Detail Enhancement

Lens	FOV (HxV)	Min Focus Distance
	640x512	
9.1mm	48.6°x38.6°, F1.0	0.5m
13mm	32.9°x26.6°, F1.0	0.5m
19mm	22.9°x18.4°, F1.0	0.5m
25mm	17.4°x14.0°, F1.0	1m
35mm	12.5°x10.0°, F1.0	1.5m
55mm	8.6°x6.4°, F1.0	2m

NETWORK

Interface	100BASE-TX/1000BASE-T or 100BASE-FX/1000BASE-X (fiber)
Security	- User Authentication/ HTTPS/ IP Filter/ IEEE 802.1x/SNMPv3 (visible) - User Authentication/HTTPS (thermal)
ONVIF	ONVIF profile G/S/T/M (visible), ONVIF S (thermal)
Protocols	- ARP, PPPoE, IPv4/v6, ICMP, IGMP, QoS, TCP, UDP, DHCP, UPnP, SNMP, SMTP, RTP, RTSP, HTTP, HTTPS, FTP, NTP, DDNS (visible) - TCP, UDP, RTP, RTSP, RTCP, HTTP, HTTPS, ICMP, FTP, SMTP, DHCP, IGMP, QoS, NTP, DNS (thermal)

FIBER MEDIA CONVERTER

Interface	100 Base-FX/1000BASE-X
Cabling	Singlemode (9/125 µm) /two fibers/SC connector
Maximum Distance	20km
Wavelength	1310 nm

MODELS

TXPD1TV4-Tlxx-IP-S	New Generation Explosionproof DUAL PTZ IP camera station, 24VAC
TXPD2TV4-Tlxx-IP-S	New Generation Explosionproof DUAL PTZ IP camera station, 120VAC
TXPD3TV4-Tlxx-IP-S	New Generation Explosionproof DUAL PTZ IP camera station, 230VAC
TXPD1TV4-Tlxx-SM-S	New Generation Explosionproof DUAL PTZ IP camera station, SM FO Media Converter, 24VAC
TXPD2TV4-Tlxx-SM-S	New Generation Explosionproof DUAL PTZ IP camera station, SM FO Media Converter, 120VAC
TXPD3TV4-Tlxx-SM-S	New Generation Explosionproof DUAL PTZ IP camera station, SM FO Media Converter, 230VAC

(+) Gridless version available on request

To order the required camera configuration, please replace "Tlxx" with the TI number indicated in the table below

CAMERA MODEL SELECTION (TIXX)

	640x512	
	9Hz	25Hz
9.1mm	TI22	TI32
13mm	TI23	TI33
19mm	TI24	TI34
25mm	TI25	TI35
35mm	TI26	TI36
55mm	TI27	TI37

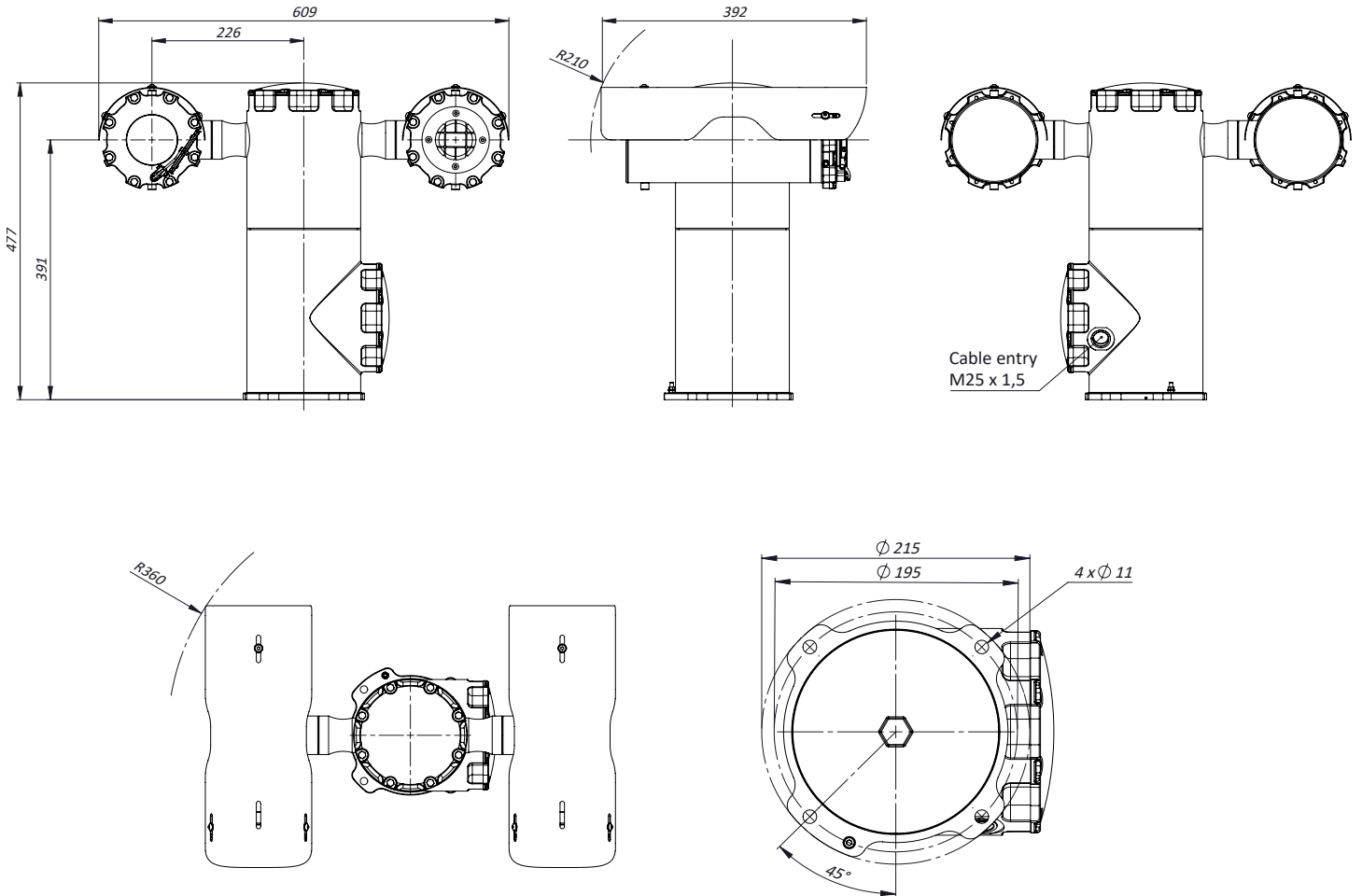
PRE-ASSEMBLED CABLE TAILS

EXACCTF3-B	3 meters armoured composite cable tail (power, Ethernet, data) with 2x M25 barrier nickel plated brass glands.
EXACCTF3-D	3 meters armoured composite cable tail (power, data, fiber optic) with 2x M25 barrier nickel plated brass glands. Fiber termination: SC.
EXACCTF5-B	5 meters armoured composite cable tail (power, Ethernet, data) with 2x M25 barrier nickel plated brass glands.
EXACCTF5-D	5 meters armoured composite cable tail (power, data, fiber optic) with 2x M25 barrier nickel plated brass glands. Fiber termination: SC.
EXACCTF10-B	10 meters armoured composite cable tail (power, Ethernet, data) with 2x M25 barrier nickel plated brass glands.
EXACCTF10-D	10 meters armoured composite cable tail (power, data, fiber optic) with 2x M25 barrier nickel plated brass glands. Fiber termination: SC.

ACCESSORIES

SSBK-L	Wall mounting bracket
---------------	-----------------------

DIMENSIONS



Dimensions in millimetres - Tolerances according QMS - Design and products specifications subject to change without notice - rev. 20240326